



RAPA BOYA®

Decorative Paint



www.rapaboya.com





RAPA BOYA®

Rapa Paint; delivers it's experience and know-how on paint production to customers with paint factory since 2013. We manufacture water-based interior, exterior paints, primers, varnishes, epoxy paints, furniture groups and all kinds of decorative paints which are rising in recent years and it comes with importation in large quantities. We are adopting ourselves as a principle which is exporting to foreign countries by producing decorative paints and transforming them into Turkish brands.



www.rapaboya.com

Index



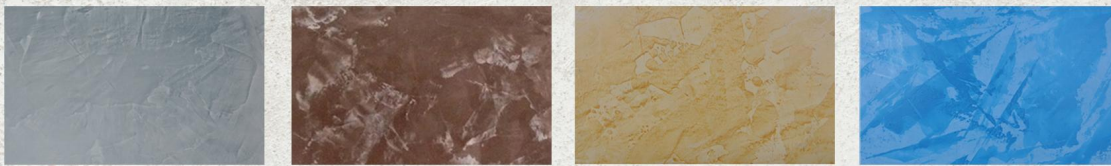
Star



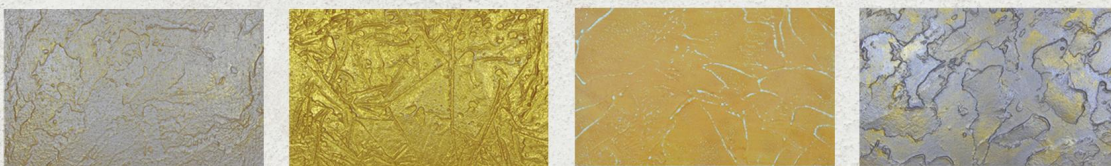
Brillant



Marble Effect



Alaturka



Stone Effect



Star

Pearlescent, bright, dense, viscous decorative paint used on walls and ceilings on interior walls. It is water-based and can be wiped off thanks to its silky texture.

Application

The edges of the area must be taped with the masking tape before applying the paint. It is applied with trowel or roller as the first layer. (If applied with roller, it should be diluted with 10% water.) After 3-4 hours of drying, second coat paint application is made and given pattern with special effect products

Consumption: 4 - 6 m² / Kg



Patterns



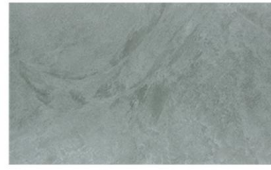
Star-1



Star-2



Star-3



Star-4



Star-5

Colors



S-101



S-102



S-103



S-104



S-105



S-106



S-107



S-108



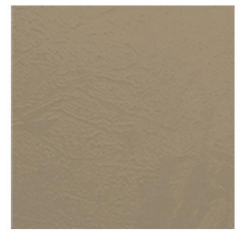
S-109



S-110



S-111



S-112



S-113



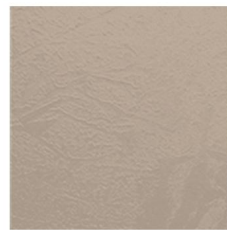
S-114



S-115



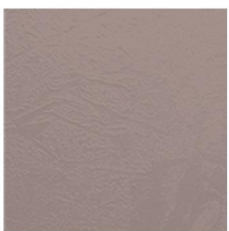
S-116



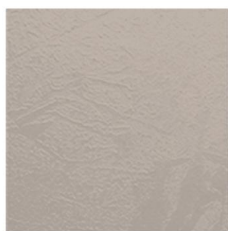
S-117



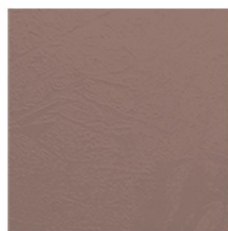
S-118



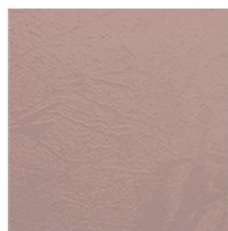
S-119



S-120



S-121



S-122



S-123



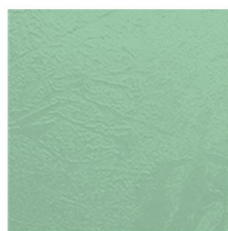
S-124



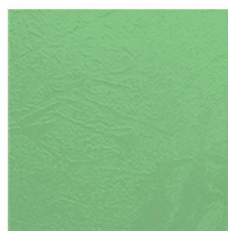
S-125



S-126



S-127



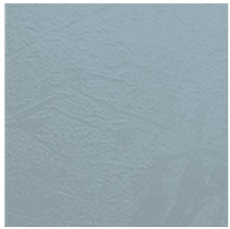
S-128



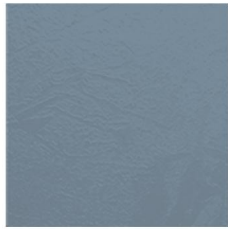
S-129



S-130



S-131



S-132



S-133



S-134



S-135



S-136



S-137



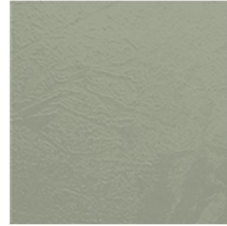
S-138



S-139



S-140



S-141



S-142



S-143



S-144



S-145



S-146



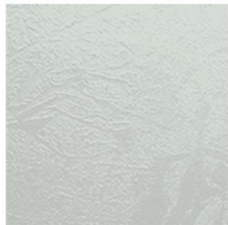
S-147



S-148



S-149



S-150



S-151



S-152



S-153



S-154



S-155



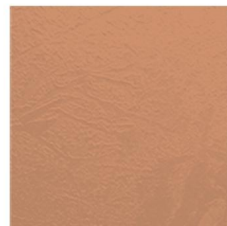
S-156



S-157



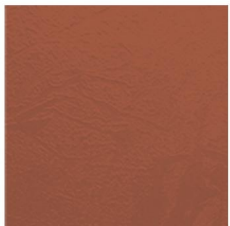
S-158



S-159



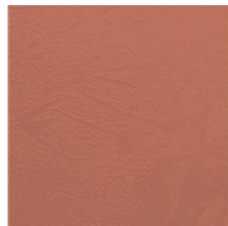
S-160



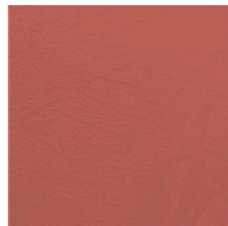
S-161



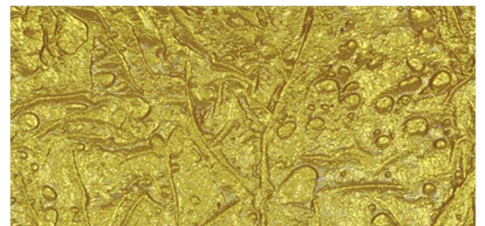
S-162



S-163



S-164



Varak

Brillant

Metallic bright intense viscous, decorative paint used on interior walls and ceilings. It is water-based and can be wiped off thanks to its silky texture.

Application

The edges of the area must be taped with the masking tape before applying the paint. According to the application diversity, it is applied as a single or double layer with of brush and trowel.

Consumption: 5-6 m² / kg



Patterns



Brillante-1

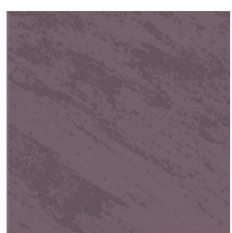


Brillante-2

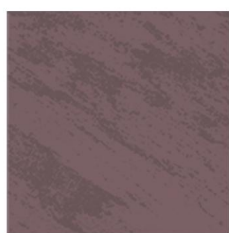


Brillante-3

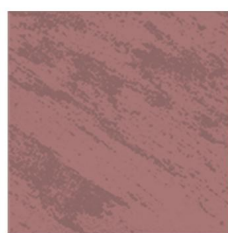
Colors



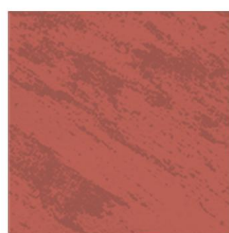
B-101



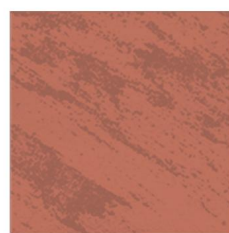
B-102



B-103



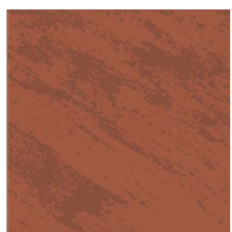
B-104



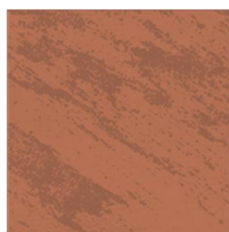
B-105



B-106



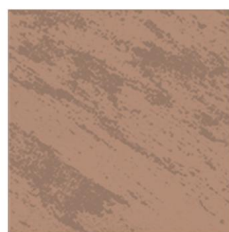
B-107



B-108



B-109



B-110



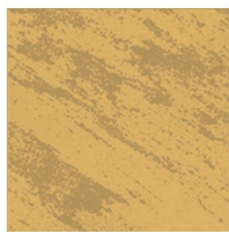
B-111



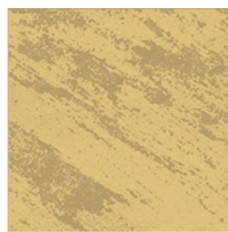
B-112



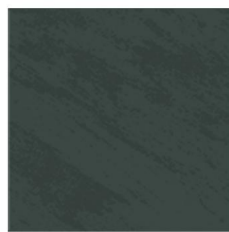
B-113



B-114



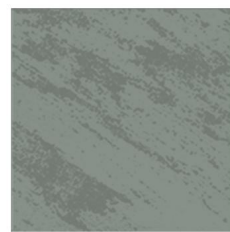
B-115



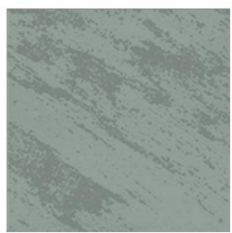
B-116



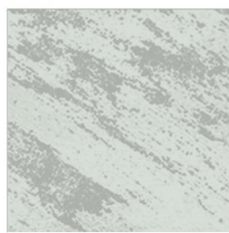
B-117



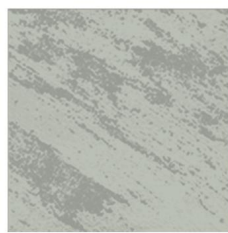
B-118



B-119



B-120



B-121



B-122



B-123



B-124



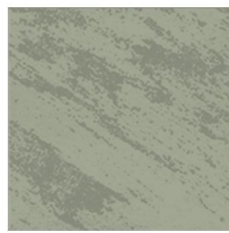
B-125



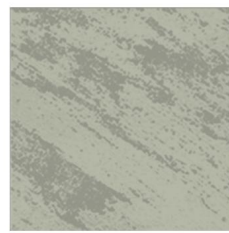
B-126



B-127



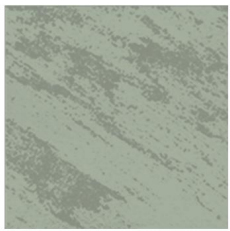
B-128



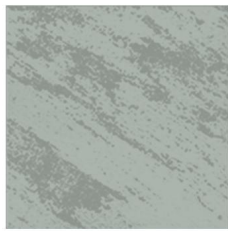
B-129



B-130



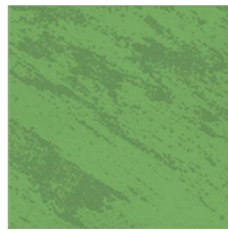
B-131



B-132



B-133



B-134



B-135



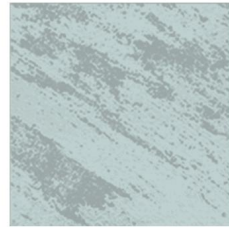
B-136



B-137



B-138



B-139



B-140



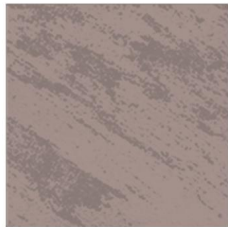
B-141



B-142



B-143



B-144



B-145



B-146



B-147



B-148



B-149



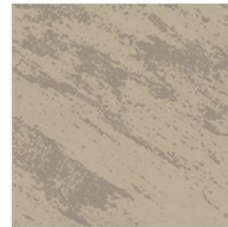
B-150



B-151



B-152



B-153



B-154



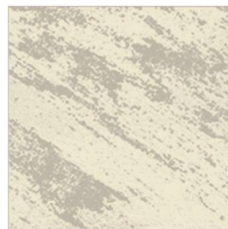
B-155



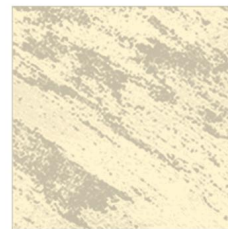
B-156



B-157



B-158



B-159



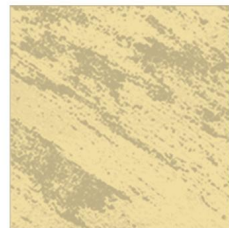
B-160



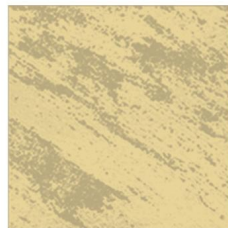
B-161



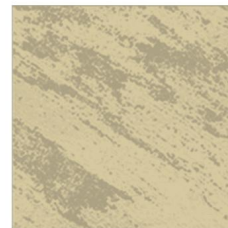
B-162



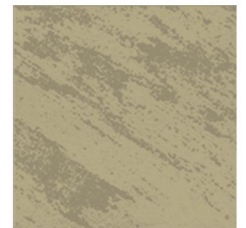
B-163



B-164



B-165



B-166

Marble Effect

Decorative paint with an antique marble look on interior walls and ceilings. It is water based and has high air breathing. It can be applied brightly or matte depending on demand.

Application

The edges of the area must be taped with the masking tape before applying the paint. Applied with trowel as the first layer. After drying for 3-4 hours, second layer is applied with trowel and polishing process is started. Depending on demand, polishing and polishing can also be done to give a protective and shine.

Consumption: 4-5 m² / kg



Patterns



Mermer Efekt - 1



Mermer Efekt - 2



Mermer Efekt - 3



Mermer Efekt - 4

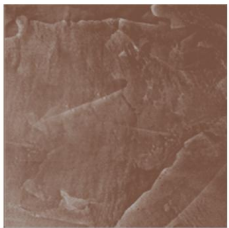


Mermer Efekt - 5

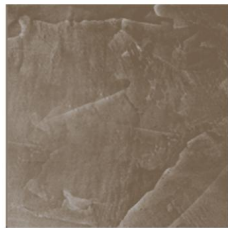


Mermer Efekt - 6

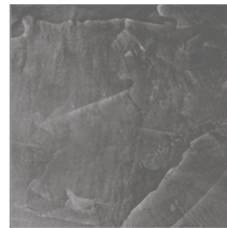
Colors



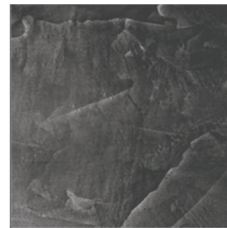
M-101



M-102



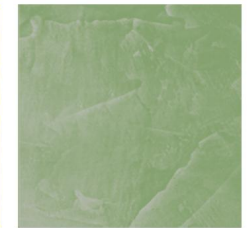
M-103



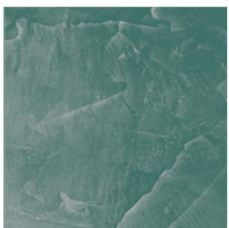
M-104



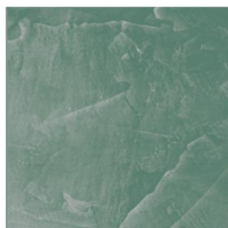
M-105



M-106



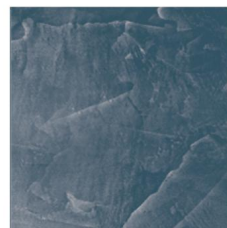
M-107



M-108



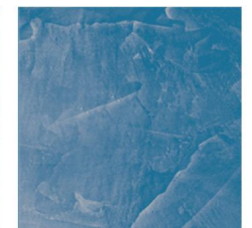
M-109



M-110



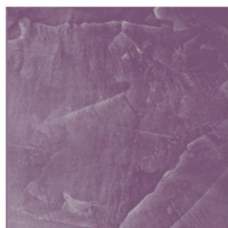
M-111



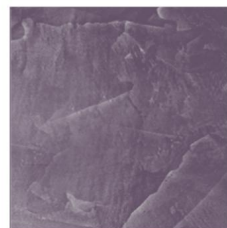
M-112



M-113



M-114



M-115



M-116



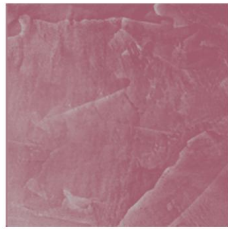
M-117



M-118



M-119



M-120



M-121



M-122



M-123



M-124



M-125



M-126



M-127



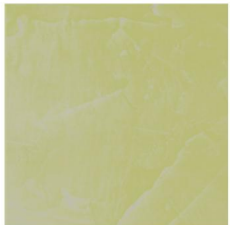
M-128



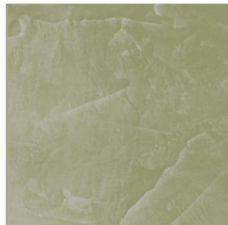
M-129



M-130



M-131



M-132



M-133



M-134



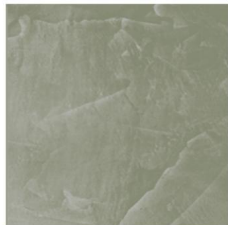
M-135



M-136



M-137



M-138



M-139



M-140



M-141



M-142



M-143



M-144



M-145



M-146



M-147



M-148



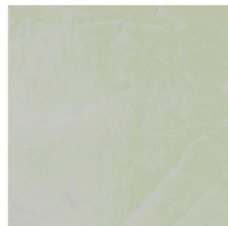
M-149



M-150



M-151



M-152



M-153



M-154

Alaturka

Decorative paint used on interior and exterior to use floor preparations, to give irregular effects and thick textured on the surfaces.

Application

The edges of the area must be taped with the masking tape before applying the paint. It is applied with trowel as single coat.

Consumption: 0.8 - 1.2 m² / kg



Patterns



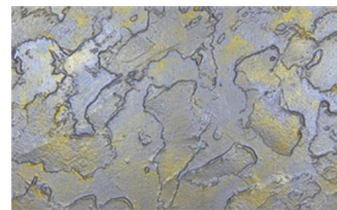
Alaturka - 1



Alaturka - 2



Alaturka - 3

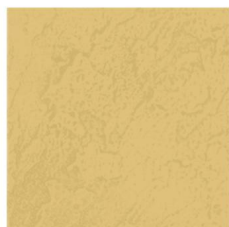


Alaturka - 4

Colors



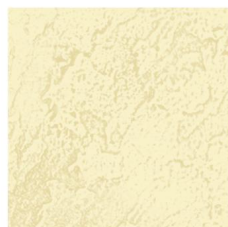
A-101



A-102



A-103



A-104



A-105



A-106



A-107



A-108



A-109



A-110



A-111



A-112



A-113



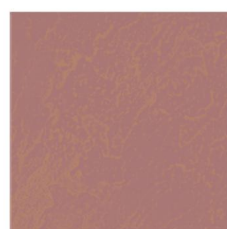
A-114



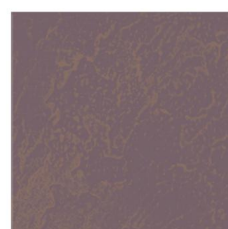
A-115



A-116



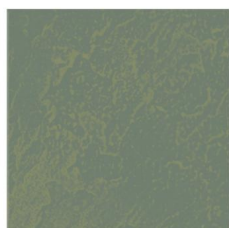
A-117



A-118



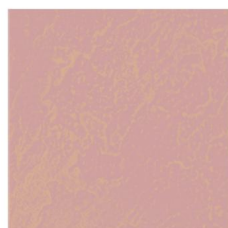
A-119



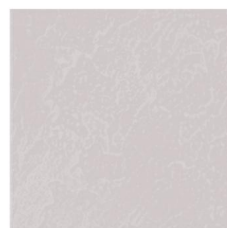
A-120



A-121



A-122



A-123



A-124

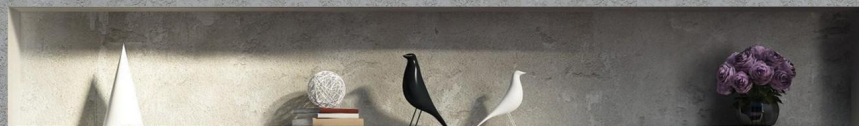
Stone Effect

It is a water based thick textured decorative paint used on the floors of inner and outer façades. It has high respiration and thick textures to cover defects on the surface. The desired effect gives the appearance of ancient stone like travertine, brick on the surface.

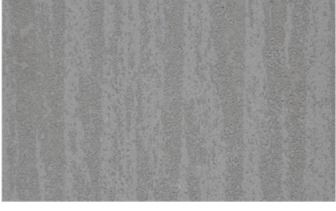
Application

The edges of the area must be taped with the masking tape before applying the paint. It is applied with trowel as the first layer. After 3-4 hours drying time, it is applied with irregular patterns with second layer trowel.

* Consumption varies according to the thicknesses of the application range.



Patterns



Taş Efekt - 1



Taş Efekt - 2



Taş Efekt - 3



Taş Efekt - 4



Taş Efekt - 5



Taş Efekt - 6

Application Samples



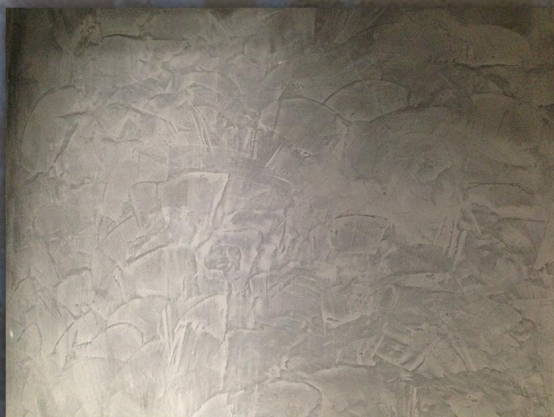
Rustika

It is a water based thick textured decorative paint used for interior and exterior. It has high respiration and to do thick textures to cover defects on the surface. It has ancient marble texture.

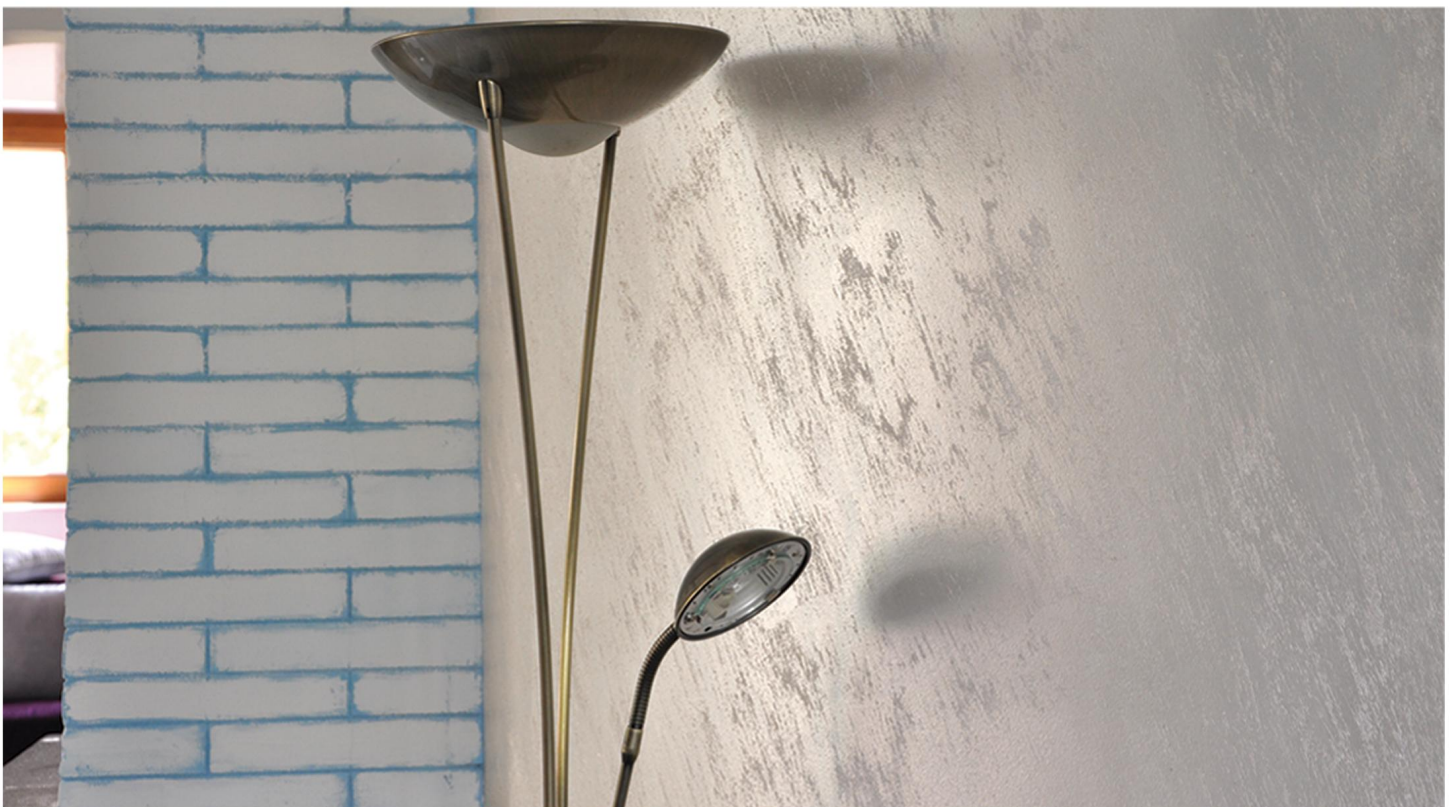
Application

As the first layer, the surface is primed with acrylic grained primer. Afterwards, RUSTIKA is applied as two layers according to the desired effect.

Consumption: 2,5 - 3 kg / m²









RAPA BOYA®

www.rapaboya.com





RAPA BOYA®

Decorative Paint



📍 Doğu Sanayi Sit. 80. Sok. No: 41 Kocasinan / KAYSERİ

@ info@rapaboya.com

☎️ +90 352 240 00 76



www.rapaboya.com

Decorative Paint